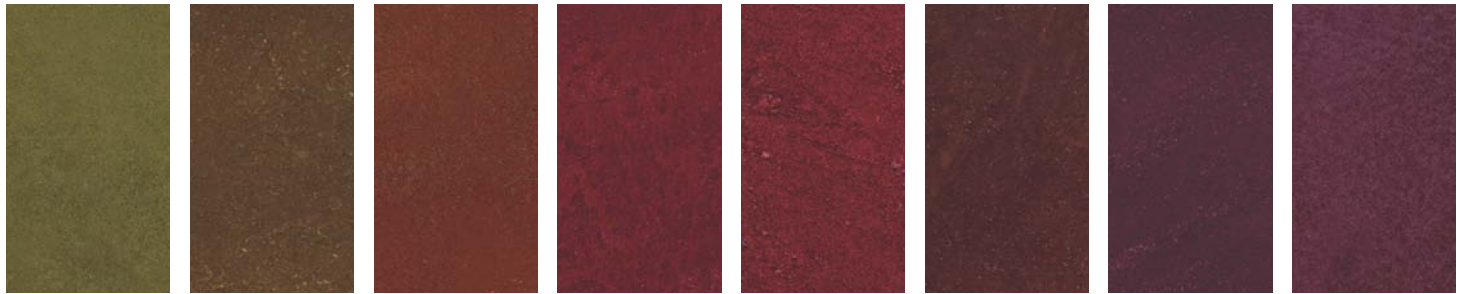


INNOTECH
DECORATIVE CONCRETE PRODUCTS

FOR PROFESSIONAL USE ONLY

Liquid Dye Concentrate

INNOTECH LIQUID DYE CONCENTRATE APPLIED TO A GRAY BASE CEMENT



Pineapple

Warm Honey

Sweet Potato

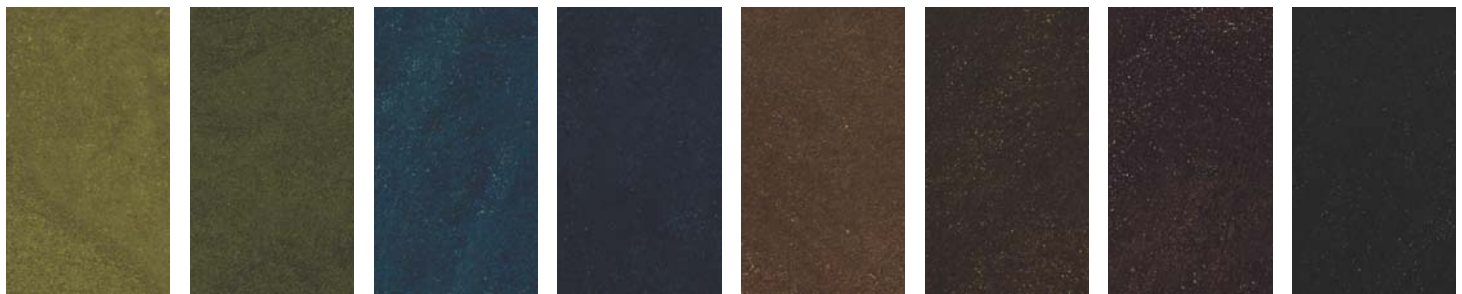
Rhubarb

Red Berry

Roasted
Pepper

Pomegranate

Violet



Dandelion

Thistle Green

Blue Poppy

Blueberry

Maple Syrup

Malt Brown

Root Beer

Black Orchid

INNOTECH LIQUID DYE CONCENTRATE APPLIED TO A WHITE BASE CEMENT



Pineapple

Warm Honey

Sweet Potato

Rhubarb

Red Berry

Roasted
Pepper

Pomegranate

Violet



Dandelion

Thistle Green

Blue Poppy

Blueberry

Maple Syrup

Malt Brown

Root Beer

Black Orchid

INNOTECH LIQUID DYE CONCENTRATE is recommended only for interior use as surfaces exposed to UV light can fade.

PRODUCT NOTE: INNOTECH LIQUID DYE CONCENTRATES can be used in conjunction with the following INNOTECH products - COLOR HARDENER†, INTEGRAL COLOR - EX†, INTEGRAL COLOR - SG†, CHEMICAL STAIN†, MICRO-TOPPING†, and STAMPABLE OVERLAY†.

Liquid Dye Concentrate

INNOTECH LIQUID DYE CONCENTRATE[†] is a translucent, micronized, chemically inert and non-reactive organic pigment. When applied to overlays, profiled concrete or concrete to be used in the polishing process, will provide intense coloring effects without creating a film or coating that can be worn away.



Product Information

INNOTECH LIQUID DYE CONCENTRATE..

- Is for interior applications only as organic pigments can fade when exposed to UV light.
- Is available in 16 striking colors.
- Is a translucent, permanent, micronized and non-reactive pigment colorant used to provide color and vivacity to interior cementitious surfaces.
- Penetrates deeply to reside in the microscopic voids of properly prepared concrete and overlay surfaces.
- Can be utilized in conjunction with all Innotech Coloring Systems as an additional tool in the production of concrete flooring and pre-cast elements provided that the installation will not be subject to UV Light exposure.
- Can be diluted to achieve a softer shade of the base colors.
- Is manufactured as a "liquid concentrate" which includes both the dye and the extender solvent. When added to acetone or water at the jobsite, it is ready to use after mixing thoroughly - usually in a few minutes.
- Meets LEED requirements when mixed with water.
- Can be used in conjunction with INNOTECH CHEMICAL STAIN[†] to achieve hybrid coloring effects.
- Can be, in most cases, sealed on the same day as application.

Maintenance

All installations should be maintained on a routine basis with the use of INNOTECH maintenance products to ensure the preservation of a high-quality, long-lasting surface. Maintenance schedules will vary depending on a number of factors, including volume and intensity of traffic, ultraviolet light exposure, geographical location and weather conditions. Resealing will be required periodically, depending on the amount of foot traffic. As with any other surface treatment, the lifetime of this product is dependent on the care it is given. The use of a qualified flooring maintenance contractor is recommended for resealing, especially in commercial applications.

- Please reference the "INNOTECH SEALER AND MAINTENANCE PRODUCT GUIDE" to determine the correct sealer for a specific application.

†PLEASE REFER TO CORRESPONDING TECHNICAL BULLETIN FOR PRODUCT AND APPLICATION DATA.

INNOTECH LIQUID DYE CONCENTRATE and other INNOTECH products are for professional use only.

Innotech Decorative Concrete Products is a registered tradename of ChromaSystems LLC, a wholly owned part of the ChromaScape family of companies. For more information, go to www.chromascape.com



© 2009 CHROMASYSTEMS, LLC. Printed in U.S.A

10M

12.09

INNOTECH products can be purchased at:



Mixed Sources
Product group from well-managed
forests, controlled sources and
recycled wood or fibre

Cert no. SGS-COC-005312
www.fsc.org
© 1996 Forest Stewardship Council



INNOTECH Decorative Concrete Products
2055 Enterprise Parkway • Twinsburg, OH 44087
Customer Service 877-829-7880 or 330-425-2506
Fax 330-425-2466
www.innotechdcp.com